

ARCTIC CROSS



The 2016 Alaska Cyclocross Season

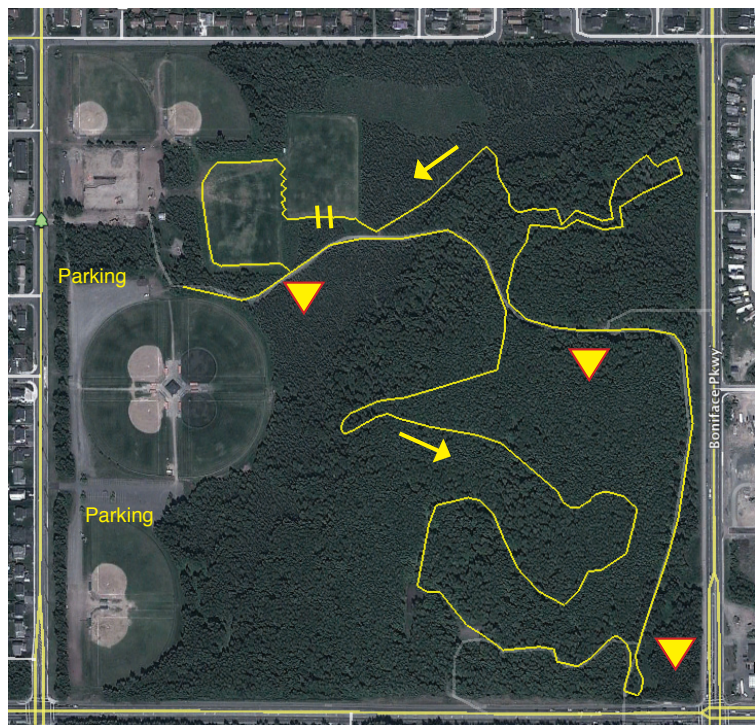


Arctic Cross #4

Cartee Fields

This park is at Debarr and Pine near Costco. Lots of parking and a nice playground.

We will need several volunteers to help with trail intersections. This course will intersect the paved bicycle path several times. Our permit requires flaggers. Please volunteer at the timing tent before the race.



Saturday 9/24 Cartee Fields

10:30 am	Beginner Men & Unicycles	40 minutes + one lap
11:30 am	Beginner, Master & Open Women	40 minutes + one lap
11:50 am	Juniors (concurrent with women's race)	20 minutes + one lap
12:30 pm	Kiddo Kross (pedallers & striders)	One Lap (short course)
1:00 pm	Master Men & Open Men	50 minutes + one lap

Registration closes 20 minutes before each race.

More info at:

www.arcticcross.org and Facebook - [arcticcrossalaska](https://www.facebook.com/arcticcrossalaska)